



UNIVERSITÀ  
DI TORINO



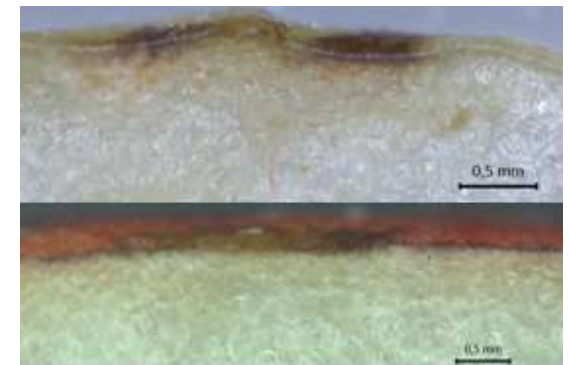
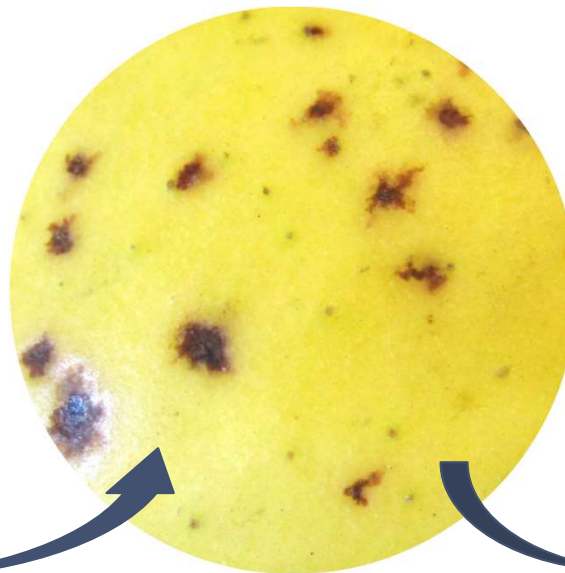
# Dry lenticel rot - an emerging postharvest disorder on apples in Northern Italy

Stefanie Primisser

Evi Deltedesco and Sabine Oettl

# *Ramularia* spp.: Dry lenticel rot

- Appearance of reddish-brown lenticel speckles after 4-6 months in cold storage
- No prior symptoms in the field
- Superficial dry rot → no penetration into fruit flesh
- Progressive decay after prolonged shelf life

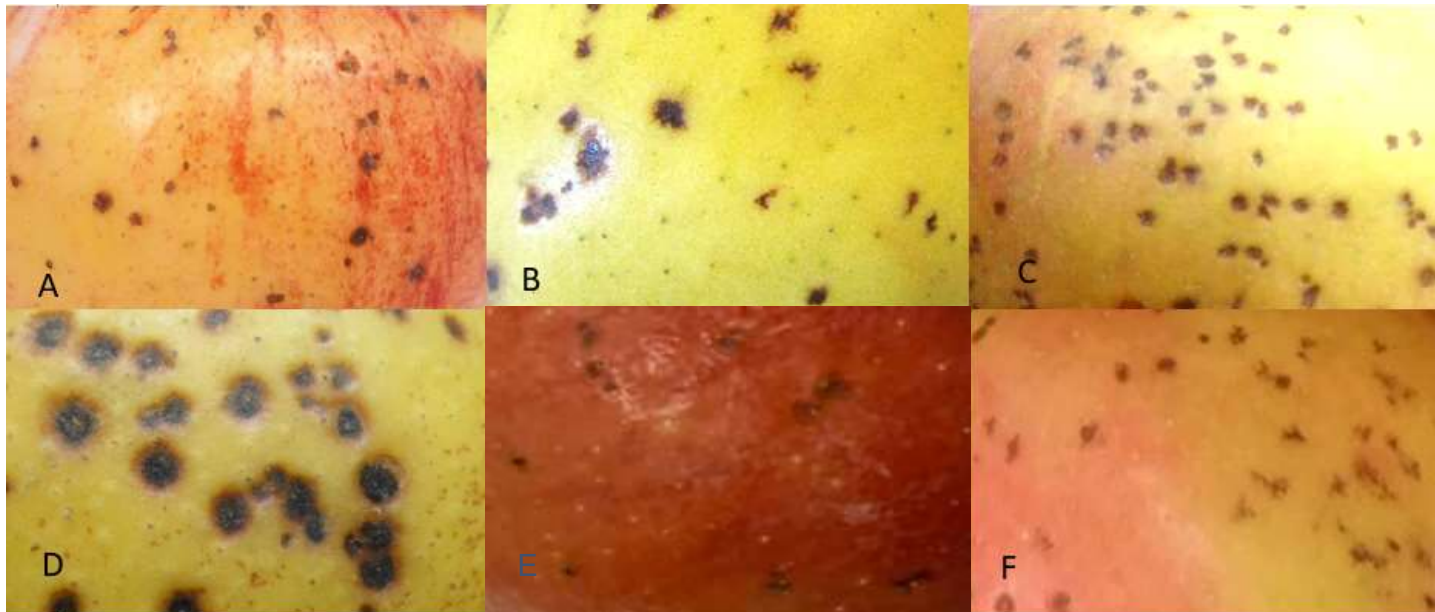


# Symptoms on different cultivars

Gala

Golden Delicious

Braeburn



Shinano Gold<sup>(cov)</sup>/  
yello<sup>®</sup>

Inored<sup>(cov)</sup>/Story<sup>®</sup>

Bonita

**Thank you for your attention.**  
See you at my poster!

Thanks for the support:  
South Tyrol Apple Consortium  
South Tyrolean Extension Service for Fruit and Wine Growing

